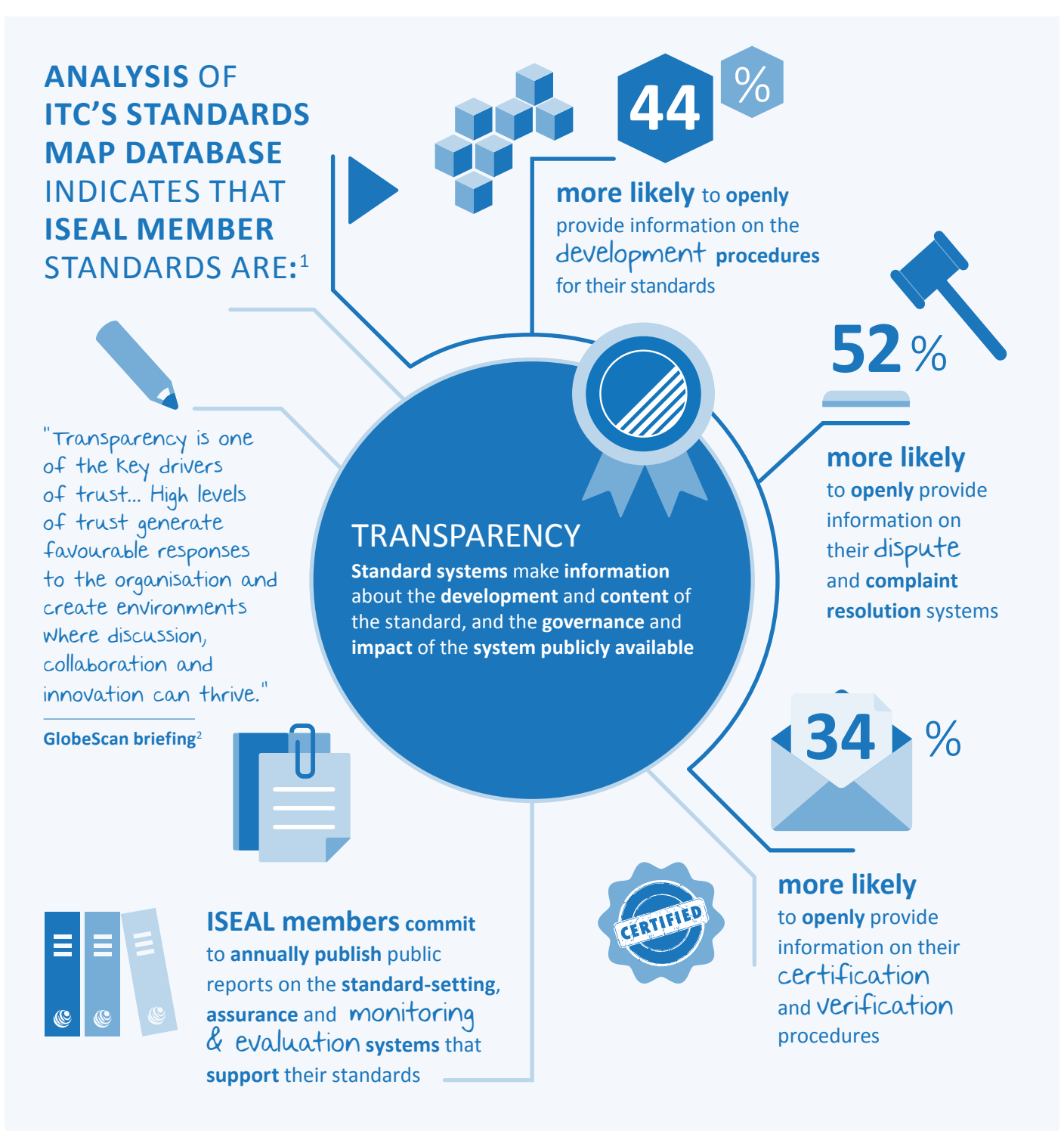


Research shows that ISEAL full membership is strongly linked to improved transparency, accessibility and rigour of a standards system.

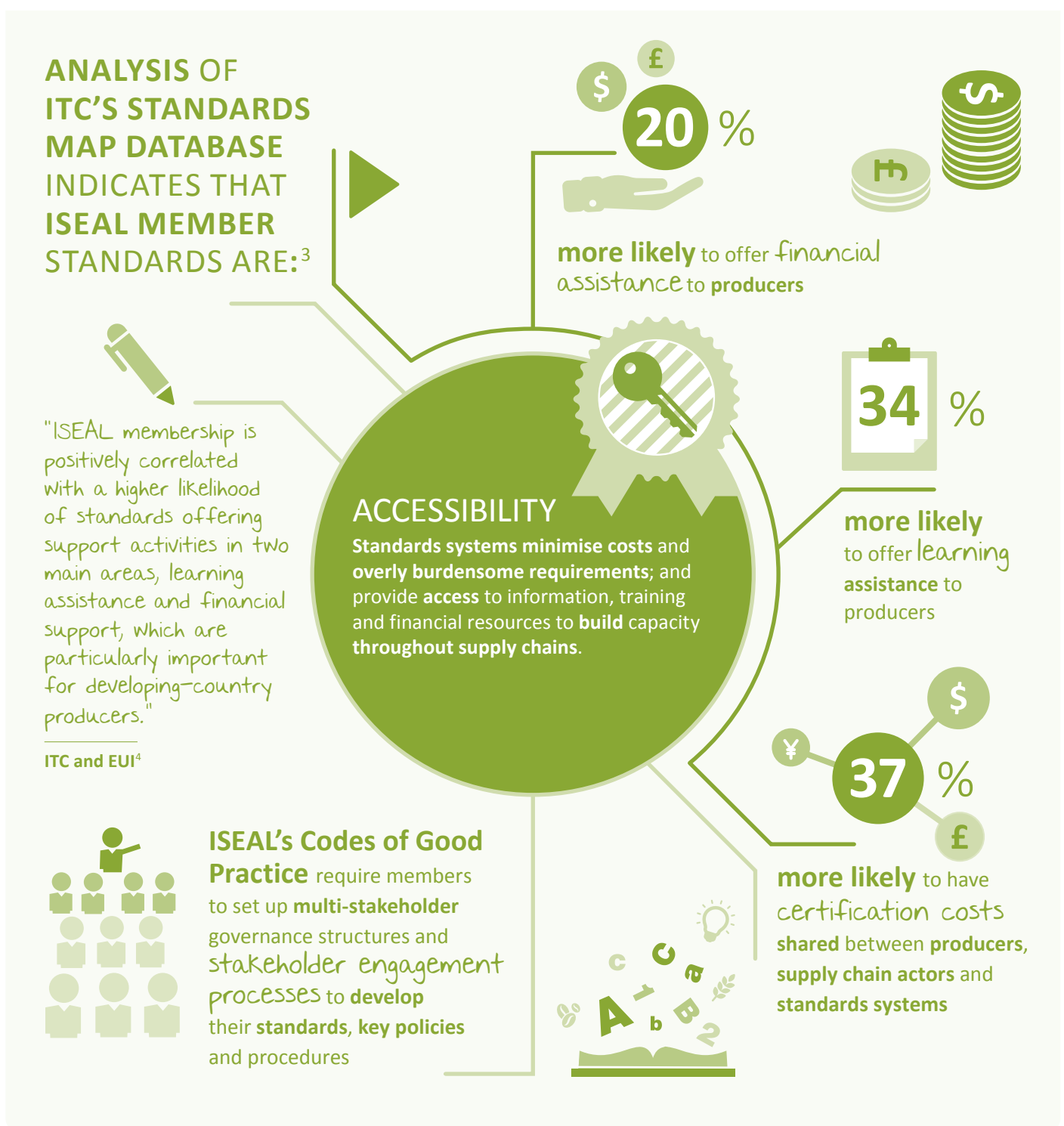
## TRANSPARENCY

ISEAL membership is an important factor in determining the transparency of a standards system.



## ACCESSIBILITY

ISEAL membership is an important predictor of the producer-friendliness of a standards system.



## RIGOUR AND CONTINUOUS IMPROVEMENT

ISEAL members consistently improve the rigour of their systems as part of their compliance with ISEAL's three Codes.



ISEAL'S CODES OF GOOD PRACTICE ARE SEEN AS GLOBAL REFERENCES FOR DEVELOPING CREDIBLE STANDARDS

Find out more about ISEAL's Codes of Good Practice:

- Standard-Setting Code
- Assurance Code
- Impacts Code

Through compliance with ISEAL's Codes of Good Practice, ISEAL members embody the Credibility Principles of rigour, transparency, efficiency, relevance, impartiality, improvement, sustainability, engagement, accessibility and truthfulness, making the link between action and sustainability impact.

ISEAL represents the global movement of sustainability standards. To find out more about our members visit [www.iseal.org](http://www.iseal.org)

1. International Trade Centre and European University Institute (2016). Social and environmental standards: Contributing to more sustainable value chains. ITC, Geneva. Pg: 21-22. 2. GlobeScan (2017). Trust and Transparency in the Supply Chain: GlobeScan e-brief. Pg: 2-3. 3. Fiorini, M et.al (2017). Suppliers' Access to Voluntary Sustainability Standards. European University Institute Working Papers. Pg: 18-19. 4. International Trade Centre and European University Institute (2016). Social and environmental standards: Contributing to more sustainable value chains. ITC, Geneva. Pg: 21. 5. This section is based on raw data compiled and analysed by the ISEAL Secretariat as part of ISEAL members' compliance with the three Codes of Good Practice. 6. Interview with ISEAL member staff as part of ISEAL's internal evaluation of ISEAL's Assurance and Impacts Codes, conducted in 2016.